

Chem-Impex International, Inc.

Tel: (630) 766-2112

E-mail: sales@chemimpex.com

Shipping and Correspondence:

935 Dillon Drive

Wood Dale, IL 60191

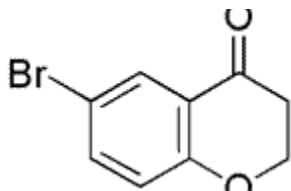
Fax: (630) 766-2218

Web site: www.chemimpex.com

Manufacturing site:

825 Dillon Drive

Wood Dale, IL 60191



Product Specifications

Catalogue Number 30726

Product

6-Bromo-4-chromanone

6-Bromo-2,3-dihydro-4*H*-chromen-4-one

CAS Number 49660-57-3

Molecular Formula C₉H₇BrO₂

Molecular Weight 227.05

Appearance Pale yellow crystalline solid

Solubility Soluble in Chloroform

Melting Point 72-79 °C

¹H NMR Conforms to structure

Purity by GC ≥ 98%

Storage Store at 0-8 °C

For Laboratory Use Only