

# Chem-Impex International, Inc.

---

**Tel:** (630) 766-2112

**E-mail:** sales@chemimpex.com

**Shipping and Correspondence:**

935 Dillon Drive

Wood Dale, IL 60191

**Fax:** (630) 766-2218

**Web site:** www.chemimpex.com

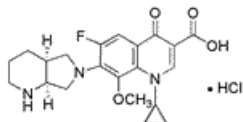
**Manufacturing site:**

825 Dillon Drive

Wood Dale, IL 60191

---

## Product Specifications



<b>Catalogue Number</b>	30698
<b>Product</b>	<b>Moxifloxacin hydrochloride</b> 1-Cyclopropyl-6-fluoro-8-methoxy-7-[(4aS,7aS)-
<b>CAS Number</b>	186826-86-8
<b>Molecular Formula</b>	C <sub>21</sub> H <sub>24</sub> FN <sub>3</sub> O <sub>4</sub> •HCl
<b>Molecular Weight</b>	437.89

---

<b>Appearance</b>	Slightly yellow to yellow powder or crystals
<b>Anion</b>	Sulphate: ≤ 0.04%
<b>Water Content (Karl Fisher)</b>	3.5 - 4.5%
<b>pH</b>	3.9-4.6 (0.2% aqueous solution)
<b>Infrared Spectrum</b>	Conforms to structure
<b>Related Substances</b>	Moxifloxacin related compound A: ≤ 0.1% Moxifloxacin related compound B: ≤ 0.1% Moxifloxacin related compound C: ≤ 0.1% Moxifloxacin related compound D: ≤ 0.1% Moxifloxacin related compound E: ≤ 0.1% Other individual impurities: ≤ 0.5%
<b>Residue On Ignition</b>	≤ 0.1%
<b>Assay (anhydrous basis)</b>	98 - 102%
<b>Grade</b>	Meets USP specification
<b>Storage</b>	Store at RT
<b>Additional Information</b>	The retention time of the major peak in HPLC corresponds to the standard. Test for chloride: positive Enantiomer purity : ≤ 0.15% Total impurities : ≤ 0.5%

# *Product Specifications*

Catalog Number: 30698

---

**For Laboratory Use Only**