

# Chem-Impex International, Inc.

---

**Tel:** (630) 766-2112

**E-mail:** sales@chemimpex.com

**Shipping and Correspondence:**

935 Dillon Drive

Wood Dale, IL 60191

**Fax:** (630) 766-2218

**Web site:** www.chemimpex.com

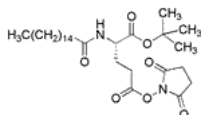
**Manufacturing site:**

825 Dillon Drive

Wood Dale, IL 60191

---

## Product Specifications



<b>Catalogue Number</b>	30516
<b>Product</b>	<b><i>N</i>-Palmitoyl-L-glutamic acid <math>\alpha</math>-<i>tert</i>-butyl ester</b> Palm-L-Glu(OSu)-OtBu Palmitoyl-Glu(OSu)-OtBu
<b>CAS Number</b>	204521-63-1
<b>Molecular Formula</b>	C <sub>29</sub> H <sub>50</sub> N <sub>2</sub> O <sub>7</sub>
<b>Molecular Weight</b>	538.7

---

<b>Appearance</b>	White crystalline powder
<b>Melting Point</b>	84 - 91 °C
<b>Optical Rotation</b>	[ $\alpha$ ] <sub>D</sub> <sup>20</sup> = -12.5 to -15.0 ° (C=1 in MeOH)
<b>Purity by HPLC</b>	≥ 99%
<b>Purity by TLC</b>	≥ 98%
<b>Storage</b>	Store at ≤ -10 °C

**For Laboratory Use Only**