

Chem-Impex International, Inc.

Tel: (630) 766-2112

E-mail: sales@chemimpex.com

Shipping and Correspondence:

935 Dillon Drive

Wood Dale, IL 60191

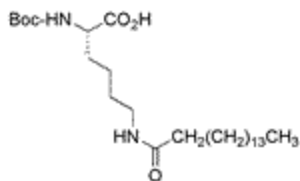
Fax: (630) 766-2218

Web site: www.chemimpex.com

Manufacturing site:

825 Dillon Drive

Wood Dale, IL 60191



Product Specifications

Catalogue Number	30470
Product	N^α-Boc-N^ε-Palmitoyl-L-Lysine Boc-L-Lys(Palm)-OH
CAS Number	59515-45-6
Molecular Formula	C ₂₇ H ₅₂ N ₂ O ₅
Molecular Weight	484.7
Appearance	Off-white crystalline powder
Melting Point	91 - 93 °C
Optical Rotation	[α] _D ²⁰ = - 10 ± 2° (C=1 in DMF)
Assay by titration	≥ 99%
Purity by HPLC	≥ 98%
Purity by TLC	≥ 99%
Storage	Store at 0-8°C

For Laboratory Use Only