

# Chem-Impex International, Inc.

---

**Tel:** (630) 766-2112

**E-mail:** sales@chemimpex.com

**Shipping and Correspondence:**

935 Dillon Drive

Wood Dale, IL 60191

**Fax:** (630) 766-2218

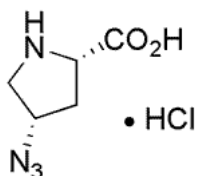
**Web site:** www.chemimpex.com

**Manufacturing site:**

825 Dillon Drive

Wood Dale, IL 60191

---



## Product Specifications

<b>Catalogue Number</b>	30465
<b>Product</b>	<b>(4S)-Azido-L-Proline hydrochloride</b> H-L-Pro(4S-N <sub>3</sub> )-OH•HCl
<b>CAS Number</b>	1217823-31-8, 892128-58-4 (net.)
<b>Molecular Formula</b>	C <sub>5</sub> H <sub>9</sub> ClN <sub>4</sub> O <sub>2</sub>
<b>Molecular Weight</b>	192.6

---

<b>Appearance</b>	White or off-white crystalline powder
<b>Melting Point</b>	147 - 154 °C
<b>Optical Rotation</b>	[α] <sub>D</sub> <sup>20</sup> = 36 ± 2 ° (C=1 in MeOH)
<b>Residual Solvents</b>	Methyl tert-butyl ether, Ethyl acetate
<b>Assay by titration</b>	≥ 95%
<b>Purity by HPLC</b>	≥ 99%
<b>Purity by TLC</b>	≥ 99%
<b>Storage</b>	Store at 0 - 8 °C

**For Laboratory Use Only**