

Chem-Impex International, Inc.

Tel: (630) 766-2112

E-mail: sales@chemimpex.com

Shipping and Correspondence:

935 Dillon Drive

Wood Dale, IL 60191

Fax: (630) 766-2218

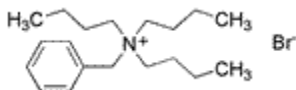
Web site: www.chemimpex.com

Manufacturing site:

825 Dillon Drive

Wood Dale, IL 60191

Product Specifications



Catalogue Number	30395
Product	Benzyltributylammonium bromide
CAS Number	25316-59-0
Molecular Formula	C ₁₉ H ₃₄ NBr
Molecular Weight	356.39

Appearance	White crystalline powder
Melting Point	169-171 °C
Water Content (Karl Fisher)	≤ 1.0%
Assay	≥ 99%
Storage	Store at RT

For Laboratory Use Only