

Chem-Impex International, Inc.

Tel: (630) 766-2112

E-mail: sales@chemimpex.com

Shipping and Correspondence:

935 Dillon Drive

Wood Dale, IL 60191

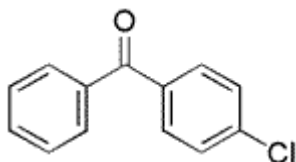
Fax: (630) 766-2218

Web site: www.chemimpex.com

Manufacturing site:

825 Dillon Drive

Wood Dale, IL 60191



Product Specifications

Catalogue Number 30375

Product **4-Chlorobenzophenone**

(4-Chlorophenyl)phenylmethanone

CAS Number 134-85-0

Molecular Formula C₁₃H₉ClO

Molecular Weight 216.67

Appearance White crystalline powder

Melting Point 75-77 °C

Loss on Drying ≤ 0.5%

Purity by GC ≥ 99%

Application UV curing type coating, printing ink, medical and pesticide intermediate

Storage Store at RT

For Laboratory Use Only