

Chem-Impex International, Inc.

Tel: (630) 766-2112

E-mail: sales@chemimpex.com

Shipping and Correspondence:

935 Dillon Drive

Wood Dale, IL 60191

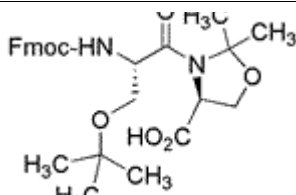
Fax: (630) 766-2218

Web site: www.chemimpex.com

Manufacturing site:

825 Dillon Drive

Wood Dale, IL 60191



Product Specifications

Catalogue Number	30318
Product	Fmoc-Ser(tBu)-Ser[Psi^(Me,Me)Pro]-OH Fmoc-Ser(tBu)-Ser[Y ^(Me,Me) Pro]-OH
CAS Number	1000164-43-1
Molecular Formula	C ₂₈ H ₃₄ N ₂ O ₇
Molecular Weight	510.58

Appearance	White to off-white powder
Solubility	Clear colorless to slightly colored solution (5% in MeOH)
Related Substances	Single impurities : ≤ 0.3%
Assay by titration	95 - 105%
Other Enantiomer	D-Ser : ≤ 0.2%
Purity by HPLC	≥ 98%
Storage	Store at ≤ -4 °C

For Laboratory Use Only