

# Chem-Impex International, Inc.

---

**Tel:** (630) 766-2112

**E-mail:** sales@chemimpex.com

**Shipping and Correspondence:**

935 Dillon Drive

Wood Dale, IL 60191

**Fax:** (630) 766-2218

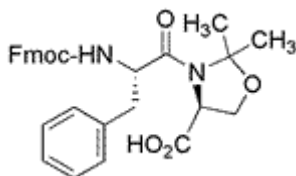
**Web site:** www.chemimpex.com

**Manufacturing site:**

825 Dillon Drive

Wood Dale, IL 60191

---



## Product Specifications

<b>Catalogue Number</b>	30316
<b>Product</b>	<b>Fmoc-Phe-Ser[Psi<sup>(Me,Me)</sup>Pro]-OH</b> Fmoc-Phe-Ser[Ψ <sup>(Me,Me)</sup> Pro]-OH (S)-3-[N-(9-Fluorenylmethoxycarbonyl)-L-phenylalaninyl]-2,2-
<b>CAS Number</b>	878797-01-4
<b>Molecular Formula</b>	C <sub>30</sub> H <sub>30</sub> N <sub>2</sub> O <sub>6</sub>
<b>Molecular Weight</b>	514.58

---

<b>Appearance</b>	White to off-white powder
<b>Solubility</b>	Clear colorless to slightly colored solution (5% in MeOH)
<b>Related Substances</b>	Single impurities : ≤ 1% Fmoc-b-Ala-OH : ≤ 0.3%
<b>Assay by titration</b>	90 - 100%
<b>Other Enantiomer</b>	D-Phe : ≤ 0.5% D-Ser : ≤ 0.5%
<b>Purity by HPLC</b>	≥ 98.5%
<b>Storage</b>	Store at ≤ -4 °C

**For Laboratory Use Only**