

Chem-Impex International, Inc.

Tel: (630) 766-2112

E-mail: sales@chemimpex.com

Shipping and Correspondence:

935 Dillon Drive

Wood Dale, IL 60191

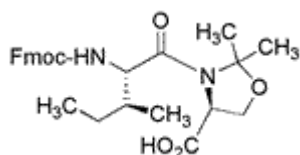
Fax: (630) 766-2218

Web site: www.chemimpex.com

Manufacturing site:

825 Dillon Drive

Wood Dale, IL 60191



Product Specifications

Catalogue Number	30310
Product	Fmoc-Ile-Ser[Psi^(Me,Me)Pro]-OH Fmoc-Ile-Ser[Psi ^(Me,Me) Pro]-OH (S)-3-[N-(9-Fluorenylmethoxycarbonyl)-L-isoleucinyl]-2,2-
CAS Number	1147996-34-6
Molecular Formula	C ₂₇ H ₃₂ N ₂ O ₆
Molecular Weight	480.56

Appearance	White to off-white powder
Solubility	Clear colorless to slightly colored solution (5% in MeOH)
Water Content (Karl Fisher)	≤ 1%
Other Amino Acids	≤ 0.2%
Related Substances	Single impurities : ≤ 1% Fmoc-b-Ala-OH : ≤ 0.3%
Assay by titration	99 - 101%
Other Enantiomer	D-Ile : ≤ 0.5% D-Ser : ≤ 0.5%
Purity by HPLC	≥ 98%
Purity by TLC	≥ 95%
Storage	Store at ≤ -4 °C

For Laboratory Use Only