

Chem-Impex International, Inc.

Tel: (630) 766-2112

E-mail: sales@chemimpex.com

Shipping and Correspondence:

935 Dillon Drive

Wood Dale, IL 60191

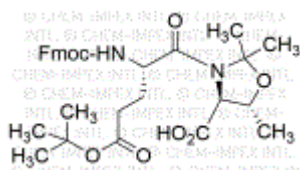
Fax: (630) 766-2218

Web site: www.chemimpex.com

Manufacturing site:

825 Dillon Drive

Wood Dale, IL 60191



Product Specifications

Catalogue Number	30307
Product	Fmoc-Glu(OtBu)-Thr[Psi^(Me,Me)Pro]-OH Fmoc-Glu(OtBu)-Thr[Ψ ^(Me,Me) Pro]-OH
CAS Number	957780-56-2
Molecular Formula	C ₃₁ H ₃₈ N ₂ O ₈
Molecular Weight	566.65

Appearance	White to off-white powder
Solubility	Clear colorless to slightly colored solution (5% in MeOH)
Water Content (Karl Fisher)	≤ 1%
Other Amino Acids	≤ 0.2%
Related Substances	Single impurities : ≤ 1% Fmoc-b-Ala-OH : ≤ 0.3%
Assay by titration	≥ 90%
Other Enantiomer	D-Glu : ≤ 0.5% D-Thr : ≤ 0.5% L-allo-Thr : ≤ 0.5% D-allo-Thr : ≤ 0.5%
Purity by HPLC	≥ 97%
Storage	Store at ≤ -4 °C

For Laboratory Use Only