

Chem-Impex International, Inc.

Tel: (630) 766-2112

E-mail: sales@chemimpex.com

Shipping and Correspondence:

935 Dillon Drive

Wood Dale, IL 60191

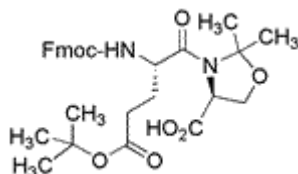
Fax: (630) 766-2218

Web site: www.chemimpex.com

Manufacturing site:

825 Dillon Drive

Wood Dale, IL 60191



Product Specifications

Catalogue Number	30306
Product	Fmoc-Glu(OtBu)-Ser[Ψ^(Me,Me)Pro]-OH Fmoc-Glu(OtBu)-Ser[Ψ ^(Me,Me) Pro]-OH (S)-3-[N α -(9-Fluorenylmethyloxycarbonyl)-L-glutamyl-tert-butyl
CAS Number	909115-33-9
Molecular Formula	C ₃₀ H ₃₆ N ₂ O ₈
Molecular Weight	552.62

Appearance	White to off-white powder
Solubility	Clear colorless to slightly colored solution (5% in MeOH)
Water Content (Karl Fisher)	$\leq 1\%$
Residual Solvents	Ethyl acetate : $\leq 1\%$ Acetate : $\leq 0.1\%$
Related Substances	Single unspecified impurities : $\leq 1\%$ $\leq 0.3\%$ (Fmoc-b-Ala-OH)
Assay by titration	$\geq 99\%$
Other Enantiomer	D-Glu : $\leq 0.5\%$ D-Ser : $\leq 0.5\%$
Purity by HPLC	$\geq 98\%$
Purity by TLC	$\geq 99\%$
Storage	Store at $\leq -4\text{ }^{\circ}\text{C}$

For Laboratory Use Only