

Chem-Impex International, Inc.

Tel: (630) 766-2112

E-mail: sales@chemimpex.com

Shipping and Correspondence:

935 Dillon Drive

Wood Dale, IL 60191

Fax: (630) 766-2218

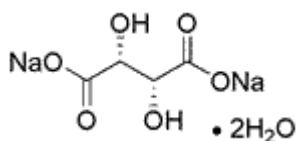
Web site: www.chemimpex.com

Manufacturing site:

825 Dillon Drive

Wood Dale, IL 60191

Product Specifications



Catalogue Number	30221
Product	Sodium L-tartrate dibasic dihydrate Sodium tartrate dihydrate
CAS Number	6106-24-7
Molecular Formula	(CHOHCOONa) ₂ •2H ₂ O
Molecular Weight	230.08

Appearance	White or colorless crystals
Solubility	69 g in 100 mL water at 43 °C
Heavy Metals	≤ 5 ppm (as Pb)
Anion	Chloride (Cl ⁻) : ≤ 5 ppm Phosphate (PO ₄ ³⁻) : ≤ 5 ppm Sulfate (SO ₄ ²⁻) : ≤ 0.005%
Cation	Ammonium (NH ₄ ⁺) : ≤ 0.003% Calcium (Ca) : ≤ 0.01% Iron (Fe) : ≤ 0.001%
pH	7 - 9
Loss on Drying	15.61 - 15.71% (150 °C)
Insoluble material	≤ 0.005%
Assay by titration	99 - 101%
Grade	ACS reagent
Storage	Store at RT
Additional Information	Identification : To pass test dehydrates at 120 °C (approx.)

For Laboratory Use Only