

# Chem-Impex International, Inc.

---

**Tel:** (630) 766-2112

**E-mail:** sales@chemimpex.com

**Shipping and Correspondence:**

935 Dillon Drive

Wood Dale, IL 60191

**Fax:** (630) 766-2218

**Web site:** www.chemimpex.com

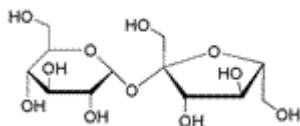
**Manufacturing site:**

825 Dillon Drive

Wood Dale, IL 60191

---

## Product Specifications



|                          |  |
|--------------------------|--|
| <b>Catalogue Number</b>  | 30147  |
| <b>Product</b>           | <b>Sucrose</b><br>b-D-Fructofuranosyl- $\alpha$ -D-glucopyranoside |
| <b>CAS Number</b>        | 57-50-1  |
| <b>Molecular Formula</b> | C <sub>12</sub> H <sub>22</sub> O <sub>11</sub>                    |
| <b>Molecular Weight</b>  | 342.3  |

---

|                               |   |
|-------------------------------|---|
| <b>Appearance</b>             | Fine white to white crystalline powder  |
| <b>Solubility</b>             | Soluble in water  |
| <b>Melting Point</b>          | 173 °C (Lit.)   |
| <b>Heavy Metals</b>           | $\leq 5$ ppm (as Pb)  |
| <b>Anion</b>                  | Chloride (Cl <sup>-</sup> ) : $\leq 0.005\%$<br>Sulfate (SO <sub>4</sub> <sup>2-</sup> ) : $\leq 0.005\%$ |
| <b>Cation</b>                 | Iron (Fe) : $\leq 5$ ppm  |
| <b>Optical Rotation</b>       | $[\alpha]_D^{20} = 66 - 67^\circ$   |
| <b>Infrared Spectrum</b>      | Conforms to structure   |
| <b>Insoluble</b>              | $\leq 0.005\%$  |
| <b>Loss on Drying</b>         | $\leq 0.03\%$   |
| <b>RNase, DNase, Protease</b> | None  |
| <b>Purity</b>                 | $\geq 99.5\%$   |
| <b>Storage</b>                | Store at RT   |
| <b>Additional Information</b> | Invert sugar : $\leq 0.05\%$<br>Glucose : $\leq 0.1\%$  |

**For Laboratory Use Only**