

Chem-Impex International, Inc.

Tel: (630) 766-2112

E-mail: sales@chemimpex.com

Shipping and Correspondence:

935 Dillon Drive

Wood Dale, IL 60191

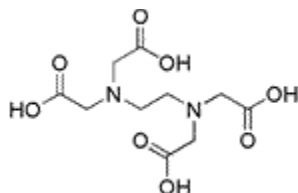
Fax: (630) 766-2218

Web site: www.chemimpex.com

Manufacturing site:

825 Dillon Drive

Wood Dale, IL 60191



Product Specifications

Catalogue Number	30131
Product	Ethylenediaminetetraacetic acid
	EDTA
CAS Number	60-00-4
Molecular Formula	C ₁₀ H ₁₆ N ₂ O ₈
Molecular Weight	292.2
<hr/>	
Appearance	White crystalline powder
Heavy Metals	≤ 0.001% (as Pb)
Trace Metal Analysis	Iron (Fe) : ≤ 0.005%
Cation	Calcium (Ca) : ≤ 0.001% Magnesium (Mg) : ≤ 5 ppm
Insoluble	≤ 0.005% (in dilute ammonium hydroxide)
Residue On Ignition	≤ 0.2%
Assay by titration	≥ 99%
Storage	Store at RT
Additional Information	Nitrilotriacetic acid: ≤ 0.1%

For Laboratory Use Only