

Chem-Impex International, Inc.

Tel: (630) 766-2112

E-mail: sales@chemimpex.com

Shipping and Correspondence:

935 Dillon Drive

Wood Dale, IL 60191

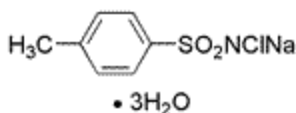
Fax: (630) 766-2218

Web site: www.chemimpex.com

Manufacturing site:

825 Dillon Drive

Wood Dale, IL 60191



Product Specifications

Catalogue Number	30103
Product	Chloramine T trihydrate N-Chloro- <i>p</i> -toluenesulfonamide sodium salt
CAS Number	7080-50-4
Molecular Formula	C ₇ H ₇ ClNNaO ₂ S•3H ₂ O
Molecular Weight	281.7

Appearance	White crystalline powder
Clarity & Color	Clarity of aqueous solution: To pass test
Solubility	14 g in 100 mL water
pH	8.0-10.0 as 5% solution at 25.0 °C
Insoluble	≤ 1.5% (in alcohol)
Assay by titration	98.0-103.0%
Grade	ACS reagent
Application	Used for detection of bromate and halogens.
Storage	Store at RT
Suitability	Determination of bromide: To pass test

For Laboratory Use Only