

# Chem-Impex International, Inc.

---

**Tel:** (630) 766-2112

**E-mail:** sales@chemimpex.com

**Shipping and Correspondence:**

935 Dillon Drive

Wood Dale, IL 60191

**Fax:** (630) 766-2218

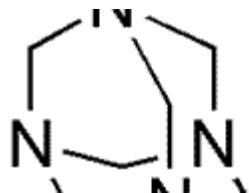
**Web site:** www.chemimpex.com

**Manufacturing site:**

825 Dillon Drive

Wood Dale, IL 60191

---



## Product Specifications

**Catalogue Number** 30078  
**Product** **Hexamethylenetetramine**

Hexamine

Urotropine

**CAS Number** 100-97-0

**Molecular Formula** C<sub>6</sub>H<sub>12</sub>N<sub>4</sub>

**Molecular Weight** 140.2

---

**Appearance** White solid

**Solubility** 67 g in 100 mL water at 20 °C

**Heavy Metals** ≤ 0.001% (as Pb)

**pKa** 6.4

**Loss on Drying** ≤ 2.0%

**Residue On Ignition** ≤ 0.1%

**Assay by titration** ≥ 99.0% (anhydrous basis)

**Grade** ACS reagent

**Application** Hexamethylenetetramine is a versatile reagent in organic synthesis. It is used in the Duff reaction, the Sommelet reaction, and in the Delepine reaction.

**Storage** Store at RT

**Additional Information** Sublimation point: 263 °C (Approx.)  
Residue after ignition: ≤ 0.1%

**For Laboratory Use Only**