

Chem-Impex International, Inc.

Tel: (630) 766-2112

E-mail: sales@chemimpex.com

Shipping and Correspondence:

935 Dillon Drive

Wood Dale, IL 60191

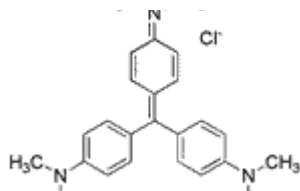
Fax: (630) 766-2218

Web site: www.chemimpex.com

Manufacturing site:

825 Dillon Drive

Wood Dale, IL 60191



Product Specifications

Catalogue Number	30052
Product	Crystal violet Hexamethylpararosaniline chloride
CAS Number	548-62-9
Molecular Formula	C ₂₅ H ₃₀ ClN ₃
Molecular Weight	407.99

Appearance	Dark green crystalline powder
Solubility	Soluble in water
Sensitivity	Sensitivity as indicator: To pass test
Loss on Drying	≤ 7.5%
Assay	≥ 90% (By spectrophotometry)
Grade	ACS reagent
Storage	Store at RT
Additional Information	Absorbance characteristics : To pass test

For Laboratory Use Only