

Chem-Impex International, Inc.

Tel: (630) 766-2112

E-mail: sales@chemimpex.com

Shipping and Correspondence:

935 Dillon Drive

Wood Dale, IL 60191

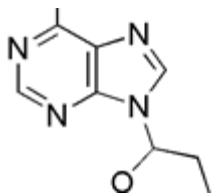
Fax: (630) 766-2218

Web site: www.chemimpex.com

Manufacturing site:

825 Dillon Drive

Wood Dale, IL 60191



Product Specifications

Catalogue Number	30035
Product	6-Chloro-9-(oxan-2-yl)purine 6-Chloro-9-(tetrahydro-2H-pyran-2-yl)-9H-purine
CAS Number	7306-68-5
Molecular Formula	C ₁₀ H ₁₁ ClN ₄ O
Molecular Weight	238.68

Appearance	White or almost white crystalline powder
Heavy Metals	≤ 20 ppm
Loss on Drying	≤ 1.0%
Residue On Ignition	≤ 0.20%
Purity by HPLC	≥ 98%
Storage	Store at 0-8 °C

For Laboratory Use Only