

Chem-Impex International, Inc.

Tel: (630) 766-2112

E-mail: sales@chemimpex.com

Shipping and Correspondence:

935 Dillon Drive

Wood Dale, IL 60191

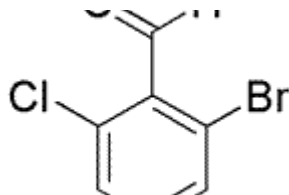
Fax: (630) 766-2218

Web site: www.chemimpex.com

Manufacturing site:

825 Dillon Drive

Wood Dale, IL 60191



Product Specifications

Catalogue Number	29997
Product	2-Bromo-6-chlorobenzaldehyde
CAS Number	64622-16-8
Molecular Formula	C ₇ H ₄ BrClO
Molecular Weight	219.5

Appearance	White to off-white to light yellow crystalline powder
¹H NMR	Conforms to structure
Assay	≥ 98%
Storage	Store at 0 - 8 °C

For Laboratory Use Only