

Chem-Impex International, Inc.

Tel: (630) 766-2112

E-mail: sales@chemimpex.com

Shipping and Correspondence:

935 Dillon Drive

Wood Dale, IL 60191

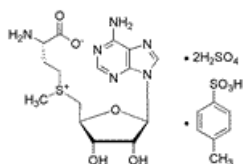
Fax: (630) 766-2218

Web site: www.chemimpex.com

Manufacturing site:

825 Dillon Drive

Wood Dale, IL 60191



Product Specifications

Catalogue Number	29902
Product	S-Adenosyl-L-methionine disulfate tosylate Ademethionine disulfate tosylate
CAS Number	97540-22-2
Molecular Formula	C ₂₂ H ₃₄ N ₆ O ₁₆ S ₄
Molecular Weight	766.8

Appearance	White to off-white powder
Heavy Metals	≤ 20 ppm
Anion	Sulfate (SO ₄ ²⁻) : 23.5 - 26.5%
Water Content (Karl Fisher)	≤ 3%
pH	1 - 2
Infrared Spectrum	Conforms to structure
Assay (anhydrous basis)	95 - 105%
Grade	Meets USP specification
Storage	Store at 0 - 8 °C
Additional Information	S, S-Isomer : ≥ 60% SAM-e Ion : 49.5 - 54.7% p-Toluenesulfonic acid : 21 - 24%

For Laboratory Use Only