

Chem-Impex International, Inc.

Tel: (630) 766-2112

E-mail: sales@chemimpex.com

Shipping and Correspondence:

935 Dillon Drive

Wood Dale, IL 60191

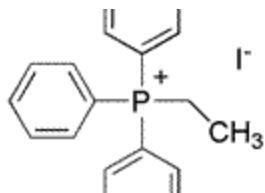
Fax: (630) 766-2218

Web site: www.chemimpex.com

Manufacturing site:

825 Dillon Drive

Wood Dale, IL 60191



Product Specifications

Catalogue Number 29869

Product

Ethyltriphenylphosphonium iodide

Phenylphosphonium ethyl iodide

ETPPI

CAS Number 4736-60-1

Molecular Formula C₂₀H₂₀PI

Molecular Weight 418.25

Appearance Off-white to pale yellow crystalline powder

Water Content (Karl Fisher) ≤ 0.25%

Assay ≥ 98%

Application Used as a Wittig reagent and phase transfer catalyst in organic synthesis. It can also be used in asymmetric hydrogenation and to make Bismuth(III) polynuclear complexes.

Storage Store at 0-8 °C

For Laboratory Use Only