

# Chem-Impex International, Inc.

---

**Tel:** (630) 766-2112

**E-mail:** sales@chemimpex.com

**Shipping and Correspondence:**

935 Dillon Drive

Wood Dale, IL 60191

**Fax:** (630) 766-2218

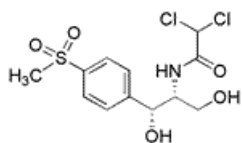
**Web site:** www.chemimpex.com

**Manufacturing site:**

825 Dillon Drive

Wood Dale, IL 60191

---



## Product Specifications

<b>Catalogue Number</b>	29857
<b>Product</b>	<b>Thiamphenicol</b>
<b>CAS Number</b>	15318-45-3
<b>Molecular Formula</b>	C <sub>12</sub> H <sub>15</sub> Cl <sub>2</sub> NO <sub>5</sub> S
<b>Molecular Weight</b>	356.22

---

<b>Appearance</b>	White to yellowish-white crystalline powder
<b>Melting Point</b>	163-167 °C
<b>Heavy Metals</b>	≤ 10 ppm
<b>Anion</b>	Chloride (Cl <sup>-</sup> ): ≤ 0.02%
<b>Acidity &amp; Alkalinity</b>	Conforms
<b>Optical Rotation</b>	[α] <sub>D</sub> <sup>20</sup> = -21° to -24° (C=1 in DMF)
<b>Loss on Drying</b>	≤ 1.0%
<b>Sulfated Ash</b>	≤ 0.1%
<b>Assay</b>	98.0-100.5%
<b>Grade</b>	BP
<b>Storage</b>	Store at 0-8 °C
<b>Additional Information</b>	Identification: Conforms Light absorption: Conforms

**For Laboratory Use Only**