

Chem-Impex International, Inc.

Tel: (630) 766-2112

E-mail: sales@chemimpex.com

Shipping and Correspondence:

935 Dillon Drive

Wood Dale, IL 60191

Fax: (630) 766-2218

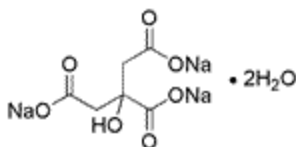
Web site: www.chemimpex.com

Manufacturing site:

825 Dillon Drive

Wood Dale, IL 60191

Product Specifications



Catalogue Number	29829
Product	Sodium citrate tribasic dihydrate
CAS Number	6132-04-3
Molecular Formula	C ₆ H ₅ O ₇ Na ₃ •2H ₂ O
Molecular Weight	294.1

Appearance	White crystalline powder
Melting Point	> 300 °C
Heavy Metals	≤ 5 ppm (as Pb)
Anion	Chloride (Cl ⁻): ≤ 0.003% Sulfate (SO ₄ ²⁻): ≤ 0.005%
Cation	Ammonium (NH ₄): ≤ 0.003% Iron (Fe): ≤ 5.0 ppm Calcium (Ca): ≤ 0.005%
Insoluble material	≤ 0.005%
Assay	≥ 99%
Grade	ACS reagent
Application	Sodium citrate is chiefly used as a food additive, usually for flavor or as a preservative.
Storage	Store at RT

For Laboratory Use Only