

Chem-Impex International, Inc.

Tel: (630) 766-2112

E-mail: sales@chemimpex.com

Shipping and Correspondence:

935 Dillon Drive

Wood Dale, IL 60191

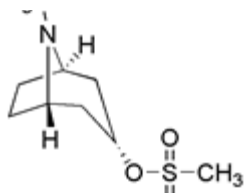
Fax: (630) 766-2218

Web site: www.chemimpex.com

Manufacturing site:

825 Dillon Drive

Wood Dale, IL 60191



Product Specifications

Catalogue Number	29381
Product	Tropine-3-mesylate
CAS Number	35130-97-3
Molecular Formula	C ₉ H ₁₇ NO ₃ S
Molecular Weight	219.3

Appearance	Light white powder
Water Content (Karl Fisher)	≤ 1%
Residual Solvents	Toluene : ≤ 890 ppm Dichloromethane : ≤ 600 ppm Ethyl acetate : ≤ 5000 ppm
Related Substances	Single unknown impurity : ≤ 0.1% Total unspecified impurity : ≤ 1%
Residue On Ignition	≤ 0.1%
Assay	98 - 102%
Storage	Store at 0 - 8 °C

For Laboratory Use Only