

Chem-Impex International, Inc.

Tel: (630) 766-2112

E-mail: sales@chemimpex.com

Shipping and Correspondence:

935 Dillon Drive

Wood Dale, IL 60191

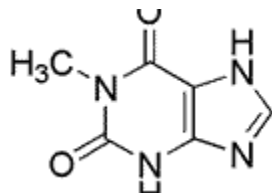
Fax: (630) 766-2218

Web site: www.chemimpex.com

Manufacturing site:

825 Dillon Drive

Wood Dale, IL 60191



Product Specifications

Catalogue Number	29338
Product	1-Methylxanthine
	2,6-Dihydroxy-1-methylpurine
CAS Number	6136-37-4
Molecular Formula	C ₇ H ₈ N ₄ O ₂
Molecular Weight	170.15
Appearance	Beige solid
¹H NMR	Conforms to structure
Purity	≥ 95% (NMR)
Storage	Store at ≤ -20 °C

For Laboratory Use Only