

Chem-Impex International, Inc.

Tel: (630) 766-2112

E-mail: sales@chemimpex.com

Shipping and Correspondence:

935 Dillon Drive

Wood Dale, IL 60191

Fax: (630) 766-2218

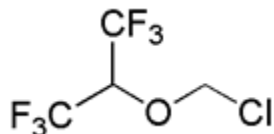
Web site: www.chemimpex.com

Manufacturing site:

825 Dillon Drive

Wood Dale, IL 60191

Product Specifications



Catalogue Number	29259
Product	2-(Chloromethoxy)-1,1,1,3,3,3-hexafluoropropane
CAS Number	26103-07-1
Molecular Formula	C ₄ H ₃ ClF ₆ O
Molecular Weight	216.51

Appearance	Clear, colorless liquid
Water Content (Karl Fisher)	≤ 1%
Purity by GC	≥ 99.5%
Storage	Store at 0-8°C

For Laboratory Use Only