

Chem-Impex International, Inc.

Tel: (630) 766-2112

E-mail: sales@chemimpex.com

Shipping and Correspondence:

935 Dillon Drive

Wood Dale, IL 60191

Fax: (630) 766-2218

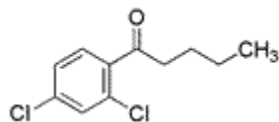
Web site: www.chemimpex.com

Manufacturing site:

825 Dillon Drive

Wood Dale, IL 60191

Product Specifications



Catalogue Number	29141
Product	2',4'-Dichlorovalerophenone
	1-(2,4-dichlorophenyl)-1-pentanone
CAS Number	61023-66-3
Molecular Formula	C ₁₁ H ₁₂ Cl ₂ O
Molecular Weight	231.12

Appearance	Pale yellow liquid
Water Content (Karl Fisher)	≤ 0.5%
Purity by GC	≥ 98.5%
Storage	Store at 0-8°C

For Laboratory Use Only