

Chem-Impex International, Inc.

Tel: (630) 766-2112

E-mail: sales@chemimpex.com

Shipping and Correspondence:

935 Dillon Drive

Wood Dale, IL 60191

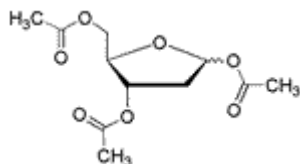
Fax: (630) 766-2218

Web site: www.chemimpex.com

Manufacturing site:

825 Dillon Drive

Wood Dale, IL 60191



Product Specifications

Catalogue Number	29110
Product	1,3,5-tri-O-Acetyl-2-deoxy-D-erythro- 1,3,5-tri-O-Acetyl-2-deoxy-D-ribose
CAS Number	4594-52-9
Molecular Formula	C ₁₁ H ₁₆ O ₇
Molecular Weight	260.24

Appearance	Yellowish brown syrup or white powder
Loss on Drying	≤ 1.0%
Related Substances	Max.single impurity : ≤ 1.0%
¹H NMR	Conforms to structure
Purity by HPLC	≥ 98%
Storage	Store at 0-8 °C

For Laboratory Use Only