

# Chem-Impex International, Inc.

---

**Tel:** (630) 766-2112

**E-mail:** sales@chemimpex.com

**Shipping and Correspondence:**

935 Dillon Drive

Wood Dale, IL 60191

**Fax:** (630) 766-2218

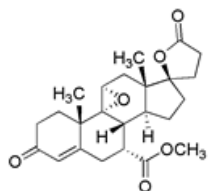
**Web site:** www.chemimpex.com

**Manufacturing site:**

825 Dillon Drive

Wood Dale, IL 60191

---



## Product Specifications

<b>Catalogue Number</b>	29057
<b>Product</b>	<b>Eplerenone</b>
<b>CAS Number</b>	107724-20-9
<b>Molecular Formula</b>	C <sub>24</sub> H <sub>30</sub> O <sub>6</sub>
<b>Molecular Weight</b>	414.5
<hr/>	
<b>Appearance</b>	White or off-white powder
<b>Heavy Metals</b>	≤ 20 ppm
<b>Infrared Spectrum</b>	Conforms to structure
<b>Loss on Drying</b>	≤ 1%
<b>Related Substances</b>	Max single impurity : ≤ 0.1% Total impurities : ≤ 0.5%
<b>Residue On Ignition</b>	≤ 0.25%
<b>Assay</b>	≥ 98%
<b>Storage</b>	Store at 0 - 8 °C

**For Laboratory Use Only**