

Chem-Impex International, Inc.

Tel: (630) 766-2112

E-mail: sales@chemimpex.com

Shipping and Correspondence:

935 Dillon Drive

Wood Dale, IL 60191

Fax: (630) 766-2218

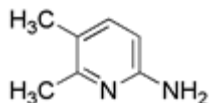
Web site: www.chemimpex.com

Manufacturing site:

825 Dillon Drive

Wood Dale, IL 60191

Product Specifications



Catalogue Number	28911
Product	6-Amino-2,3-dimethylpyridine
	2-Amino-5,6-dimethylpyridine
	6-Amino-2,3-lutidine
CAS Number	57963-08-3
Molecular Formula	C ₇ H ₁₀ N ₂
Molecular Weight	122.17
<hr/>	
Appearance	Off White to white crystalline powder
Water Content (Karl Fisher)	≤ 0.5%
Purity by GC	≥ 97%
Storage	Store at 0-8°C

For Laboratory Use Only