

# Chem-Impex International, Inc.

---

Tel: (630) 766-2112

E-mail: sales@chemimpex.com

Shipping and Correspondence:

935 Dillon Drive

Wood Dale, IL 60191

Fax: (630) 766-2218

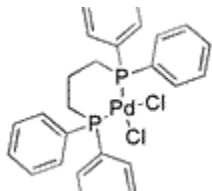
Web site: www.chemimpex.com

Manufacturing site:

825 Dillon Drive

Wood Dale, IL 60191

---



## Product Specifications

Catalogue Number	28808
Product	<b>(1,3-Bis(diphenylphosphino)propane) palladium(II) chloride Dichloromethane</b> Dichloro[1,3-bis(diphenylphosphino)propane]palladium(II) Dichloromethane Adduct
CAS Number	59831-02-6
Molecular Formula	C <sub>27</sub> H <sub>26</sub> P <sub>2</sub> •PdCl <sub>2</sub>

---

Appearance	White solid
Elemental Analysis (Found)	C: ≥ 50% H: ≥ 4%
Infrared Spectrum	Conforms to structure
Assay	≥ 15% (Pd)
Storage	Store at RT

**For Laboratory Use Only**