

Chem-Impex International, Inc.

Tel: (630) 766-2112

E-mail: sales@chemimpex.com

Shipping and Correspondence:

935 Dillon Drive

Wood Dale, IL 60191

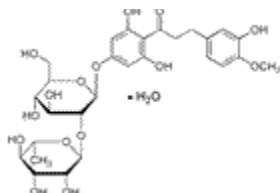
Fax: (630) 766-2218

Web site: www.chemimpex.com

Manufacturing site:

825 Dillon Drive

Wood Dale, IL 60191



Product Specifications

Catalogue Number	28802
Product	Neohesperidin dihydrochalcone hydrate
CAS Number	20702-77-6
Molecular Formula	C ₂₈ H ₃₆ O ₁₅ •H ₂ O
Molecular Weight	630.59

Appearance	White to yellowish white powder
Heavy Metals	≤ 10 ppm
Trace Metal Analysis	Arsenic (As): ≤ 1 ppm Lead (Pb): ≤ 1 ppm Mercury (Hg): ≤ 1 ppm Cadmium (Cd): ≤ 2 ppm
Yeast and Mold	≤ 1000 cfu/g
Loss on Drying	≤ 10%
E. Coli	Negative
Microbial Count	≤ 10000 cfu/g
Salmonella	Negative
Particle Size	100% through 80 meshes
Related Substances	Naringin dihydrochalcone: ≤ 2.0%
Ash	≤ 0.2%
Purity by HPLC	≥ 98%
Application	Used as a flavour enhancer in food and alcoholic beverages. Used to reduce the bitterness in pharmacological drugs.
Storage	Store at 0-8 °C
Additional Information	Acephate: ≤ 0.1 ppm Methamidophos: ≤ 0.1 ppm Parathion: ≤ 0.1 ppm PCNB: ≤ 0.1 ppm

Product Specifications

Catalog Number: 28802

For Laboratory Use Only