

Chem-Impex International, Inc.

Tel: (630) 766-2112

E-mail: sales@chemimpex.com

Shipping and Correspondence:

935 Dillon Drive

Wood Dale, IL 60191

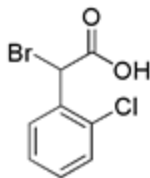
Fax: (630) 766-2218

Web site: www.chemimpex.com

Manufacturing site:

825 Dillon Drive

Wood Dale, IL 60191



Product Specifications

Catalogue Number 28774
Product **α -Bromo-2-chlorophenylacetic acid**

2-Bromo-2'-chlorophenylacetic acid

CAS Number 29270-30-2

Molecular Formula C₈H₆BrClO₂

Molecular Weight 249.49

Appearance White to off-white crystalline powder

Melting Point 106-110 °C

Loss on Drying ≤ 1.0%

Purity by HPLC ≥ 99%

Storage Store at 0-8°C

For Laboratory Use Only