

Chem-Impex International, Inc.

Tel: (630) 766-2112

E-mail: sales@chemimpex.com

Shipping and Correspondence:

935 Dillon Drive

Wood Dale, IL 60191

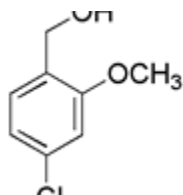
Fax: (630) 766-2218

Web site: www.chemimpex.com

Manufacturing site:

825 Dillon Drive

Wood Dale, IL 60191



Product Specifications

Catalogue Number	28645
Product	4-Chloro-2-methoxybenzyl alcohol
CAS Number	55685-75-1
Molecular Formula	C ₈ H ₉ ClO ₂
Molecular Weight	172.61

Appearance	Pale cream to cream crystalline solid
Melting Point	44-52 °C
Purity by GC	≥ 99%
Storage	Store at 0-8 °C

For Laboratory Use Only