

Chem-Impex International, Inc.

Tel: (630) 766-2112

E-mail: sales@chemimpex.com

Shipping and Correspondence:

935 Dillon Drive

Wood Dale, IL 60191

Fax: (630) 766-2218

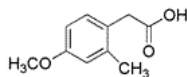
Web site: www.chemimpex.com

Manufacturing site:

825 Dillon Drive

Wood Dale, IL 60191

Product Specifications



Catalogue Number	28633
Product	4-Methoxy-2-methylphenylacetic acid 2-(4-Methoxy-2-methylphenyl)acetic acid
CAS Number	942-97-2
Molecular Formula	C ₁₀ H ₁₂ O ₃
Molecular Weight	180.2

Appearance	White powder
Solubility	Soluble in Ethylacetate
Melting Point	100 - 108 °C
Water Content (Karl Fisher)	≤ 0.5%
Assay by titration	98 - 102%
Purity by GC	≥ 98%
Storage	Store at 0 - 8 °C

For Laboratory Use Only