

Chem-Impex International, Inc.

Tel: (630) 766-2112

E-mail: sales@chemimpex.com

Shipping and Correspondence:

935 Dillon Drive

Wood Dale, IL 60191

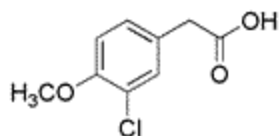
Fax: (630) 766-2218

Web site: www.chemimpex.com

Manufacturing site:

825 Dillon Drive

Wood Dale, IL 60191



Product Specifications

Catalogue Number	28630
Product	2-(3-Chloro-4-methoxyphenyl)acetic acid
CAS Number	13721-20-5
Molecular Formula	C ₉ H ₉ ClO ₃
Molecular Weight	200.62

Appearance	Off-white to pale cream crystalline powder
Melting Point	91-96 °C
Purity by GC	≥ 98%
Storage	Store at RT

For Laboratory Use Only