

# *Chem-Impex International, Inc.*

---

**Tel:** (630) 766-2112

**E-mail:** sales@chemimpex.com

**Shipping and Correspondence:**

935 Dillon Drive

Wood Dale, IL 60191

**Fax:** (630) 766-2218

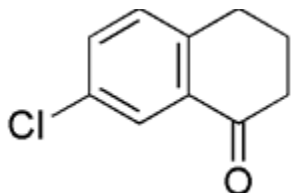
**Web site:** www.chemimpex.com

**Manufacturing site:**

825 Dillon Drive

Wood Dale, IL 60191

---



## *Product Specifications*

**Catalogue Number** 28575

**Product** **7-Chloro-1-tetralone**

7-Chloro-1,2,3,4-tetrahydronaphthalen-1-one

**CAS Number** 26673-32-5

**Molecular Formula** C<sub>10</sub>H<sub>9</sub>ClO

**Molecular Weight** 180.63

---

**Appearance** Pale yellow to white crystalline powder

**Melting Point** 90-100 °C

**Purity** ≥ 98%

**Storage** Store at 0-8°C

**For Laboratory Use Only**