

Chem-Impex International, Inc.

Tel: (630) 766-2112

E-mail: sales@chemimpex.com

Shipping and Correspondence:

935 Dillon Drive

Wood Dale, IL 60191

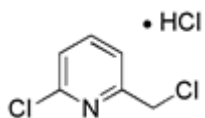
Fax: (630) 766-2218

Web site: www.chemimpex.com

Manufacturing site:

825 Dillon Drive

Wood Dale, IL 60191



Product Specifications

Catalogue Number	28539
Product	2-Methyl-6-chloromethylpyridine hydrochloride
CAS Number	3099-30-7
Molecular Formula	C ₇ H ₈ ClN•HCl
Molecular Weight	178.06

Appearance	Light brown crystalline powder
Loss on Drying	≤ 1%
Purity by GC	≥ 98%
Storage	Store at 0-8°C

For Laboratory Use Only