

# *Chem-Impex International, Inc.*

---

**Tel:** (630) 766-2112

**E-mail:** sales@chemimpex.com

**Shipping and Correspondence:**

935 Dillon Drive

Wood Dale, IL 60191

**Fax:** (630) 766-2218

**Web site:** www.chemimpex.com

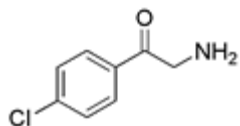
**Manufacturing site:**

825 Dillon Drive

Wood Dale, IL 60191

---

## *Product Specifications*



<b>Catalogue Number</b>	28481
<b>Product</b>	<b>2-Amino-4'-chloroacetophenone</b>
<b>CAS Number</b>	7644-03-3
<b>Molecular Formula</b>	C <sub>8</sub> H <sub>8</sub> ClNO
<b>Molecular Weight</b>	169.61

---

<b>Appearance</b>	White to off-white crystalline powder
<b>Purity by HPLC</b>	≥ 99%
<b>Storage</b>	Store at 0-8°C

**For Laboratory Use Only**