

Chem-Impex International, Inc.

Tel: (630) 766-2112

E-mail: sales@chemimpex.com

Shipping and Correspondence:

935 Dillon Drive

Wood Dale, IL 60191

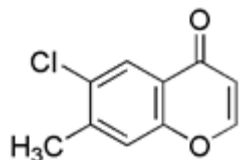
Fax: (630) 766-2218

Web site: www.chemimpex.com

Manufacturing site:

825 Dillon Drive

Wood Dale, IL 60191



Product Specifications

Catalogue Number	28292
Product	6-Chloro-7-methylchromone
CAS Number	67029-84-9
Molecular Formula	C ₁₀ H ₇ ClO ₂
Molecular Weight	194.62
<hr/>	
Appearance	Off-white powder
Melting Point	166-174 °C
Purity by HPLC	≥ 99%
Storage	Store at RT

For Laboratory Use Only