

Chem-Impex International, Inc.

Tel: (630) 766-2112

E-mail: sales@chemimpex.com

Shipping and Correspondence:

935 Dillon Drive

Wood Dale, IL 60191

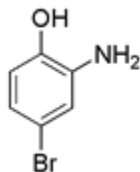
Fax: (630) 766-2218

Web site: www.chemimpex.com

Manufacturing site:

825 Dillon Drive

Wood Dale, IL 60191



Product Specifications

Catalogue Number	28279
Product	2-Amino-4-bromophenole
CAS Number	40925-68-6
Molecular Formula	C ₆ H ₆ BrNO
Molecular Weight	188.02

Appearance	Brownish red powder
Water Content (Karl Fisher)	≤ 0.5%
Purity by HPLC	≥ 98%
Storage	Store at RT

For Laboratory Use Only