

Chem-Impex International, Inc.

Tel: (630) 766-2112

E-mail: sales@chemimpex.com

Shipping and Correspondence:

935 Dillon Drive

Wood Dale, IL 60191

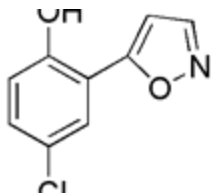
Fax: (630) 766-2218

Web site: www.chemimpex.com

Manufacturing site:

825 Dillon Drive

Wood Dale, IL 60191



Product Specifications

Catalogue Number	28222
Product	4-Chloro-2-(isoxazol-5-yl)phenol
CAS Number	86176-56-9
Molecular Formula	C ₉ H ₆ ClNO ₂
Molecular Weight	195.6

Appearance	Off-white crystalline powder
Melting Point	194-206 °C
Purity by HPLC	≥ 99%
Storage	Store at RT

For Laboratory Use Only