

Chem-Impex International, Inc.

Tel: (630) 766-2112

E-mail: sales@chemimpex.com

Shipping and Correspondence:

935 Dillon Drive

Wood Dale, IL 60191

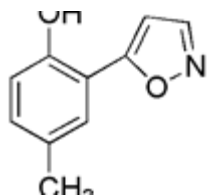
Fax: (630) 766-2218

Web site: www.chemimpex.com

Manufacturing site:

825 Dillon Drive

Wood Dale, IL 60191



Product Specifications

Catalogue Number	28221
Product	2-(5-Isoxazolyl)-4-methylphenol
CAS Number	164171-56-6
Molecular Formula	C ₁₀ H ₉ NO ₂
Molecular Weight	175.19
<hr/>	
Appearance	Off-white crystalline powder
Melting Point	171-177 °C
Purity by HPLC	≥ 98%
Storage	Store at RT

For Laboratory Use Only