

Chem-Impex International, Inc.

Tel: (630) 766-2112

E-mail: sales@chemimpex.com

Shipping and Correspondence:

935 Dillon Drive

Wood Dale, IL 60191

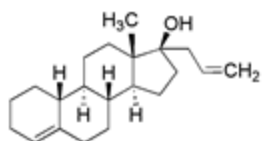
Fax: (630) 766-2218

Web site: www.chemimpex.com

Manufacturing site:

825 Dillon Drive

Wood Dale, IL 60191



Product Specifications

Catalogue Number 28191

Product **Allylestrenol**

13-Methyl-17-prop-2-enyl-2,3,6,7,8,9,10,11,12,14,15,16-dodecahydro-1H-cyclopenta[a]phenanthren-17-ol

CAS Number 432-60-0

Molecular Formula C₂₁H₃₂O

Appearance White crystalline powder

Solubility Soluble in ethanol, acetone and chloroform. Insoluble in water.

Melting Point 76-83° C

Optical Rotation +37° to +40°

Infrared Spectrum Conforms to structure

Loss on Drying ≤ 0.5%

Residue On Ignition ≤ 0.2%

Assay 97-102%

Storage Store at 0-8°C

For Laboratory Use Only