

# Chem-Impex International, Inc.

---

Tel: (630) 766-2112

E-mail: sales@chemimpex.com

Shipping and Correspondence:

935 Dillon Drive

Wood Dale, IL 60191

Fax: (630) 766-2218

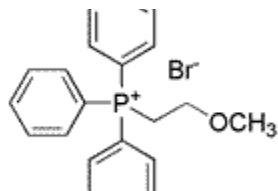
Web site: www.chemimpex.com

Manufacturing site:

825 Dillon Drive

Wood Dale, IL 60191

---



## Product Specifications

Catalogue Number	28190
Product	<b>(2-Methoxy-ethyl)-triphenyl-phosphonium bromide</b>
CAS Number	55894-16-1
Molecular Formula	C <sub>21</sub> H <sub>22</sub> BrOP
Molecular Weight	401.28

---

Appearance	White to yellow crystalline powder
Water Content (Karl Fisher)	≤ 0.5%
Assay	≥ 98%
Storage	Store at 0-8°C

**For Laboratory Use Only**