

# Chem-Impex International, Inc.

---

**Tel:** (630) 766-2112

**E-mail:** sales@chemimpex.com

**Shipping and Correspondence:**

935 Dillon Drive

Wood Dale, IL 60191

**Fax:** (630) 766-2218

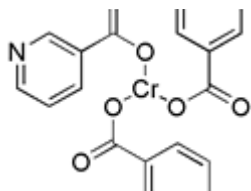
**Web site:** www.chemimpex.com

**Manufacturing site:**

825 Dillon Drive

Wood Dale, IL 60191

---



## Product Specifications

|                          |   |
|--------------------------|---|
| <b>Catalogue Number</b>  | 28155   |
| <b>Product</b>           | <b>Chromium(III) nicotinate</b>                                 |
| <b>CAS Number</b>        | 64452-96-6  |
| <b>Molecular Formula</b> | Cr(C <sub>6</sub> H <sub>4</sub> NO <sub>2</sub> ) <sub>3</sub> |
| <b>Molecular Weight</b>  | 418.3   |

---

|                      |  |
|----------------------|--|
| <b>Appearance</b>    | Gray crystalline powder                                  |
| <b>Heavy Metals</b>  | ≤ 0.001%   |
| <b>Anion</b>         | Sulfate (SO <sub>4</sub> <sup>2-</sup> ): ≤ 0.001%       |
| <b>Cation</b>        | Chromium (Cr) = 12.38 - 12.45%<br>Arsenic (As): ≤ 0.003% |
| <b>Particle Size</b> | 150 mesh: ≥ 99.0%  |
| <b>Assay</b>         | ≥ 99.5%  |
| <b>Storage</b>       | Store at RT  |

**For Laboratory Use Only**