

Chem-Impex International, Inc.

Tel: (630) 766-2112

E-mail: sales@chemimpex.com

Shipping and Correspondence:

935 Dillon Drive

Wood Dale, IL 60191

Fax: (630) 766-2218

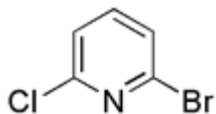
Web site: www.chemimpex.com

Manufacturing site:

825 Dillon Drive

Wood Dale, IL 60191

Product Specifications



Catalogue Number	28148
Product	2-Bromo-6-chloropyridine
CAS Number	5140-72-7
Molecular Formula	C ₅ H ₃ BrClN
Molecular Weight	192.44

Appearance	Primrose yellow solid
Loss on Drying	≤ 1%
¹H NMR	Conforms to structure
Purity by HPLC	≥ 98%
Storage	Store at 0-8°C

For Laboratory Use Only