

Chem-Impex International, Inc.

Tel: (630) 766-2112

E-mail: sales@chemimpex.com

Shipping and Correspondence:

935 Dillon Drive

Wood Dale, IL 60191

Fax: (630) 766-2218

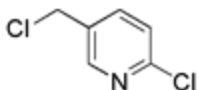
Web site: www.chemimpex.com

Manufacturing site:

825 Dillon Drive

Wood Dale, IL 60191

Product Specifications



Catalogue Number	27917
Product	2-Chloro-5-chloromethylpyridine
CAS Number	70258-18-3
Molecular Formula	C ₆ H ₅ Cl ₂ N
Molecular Weight	162.02

Appearance	Yellow crystalline
Water Content (Karl Fisher)	≤ 0.5%
Acidity	≤ 1% (H ₂ SO ₄)
Purity by GC	≥ 98%
Storage	Store at 0-8°C

For Laboratory Use Only