

Chem-Impex International, Inc.

Tel: (630) 766-2112

E-mail: sales@chemimpex.com

Shipping and Correspondence:

935 Dillon Drive

Wood Dale, IL 60191

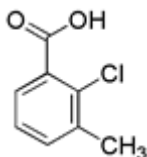
Fax: (630) 766-2218

Web site: www.chemimpex.com

Manufacturing site:

825 Dillon Drive

Wood Dale, IL 60191



Product Specifications

Catalogue Number 27865
Product **2-Chloro-3-methylbenzoic acid**

2-Chloro-*m*-toluic acid

CAS Number 15068-35-6

Molecular Formula C₈H₇ClO₂

Molecular Weight 170.59

Appearance Light yellow crystalline powder

Solubility Soluble in Methanol

Melting Point 140-146 °C

Infrared Spectrum Conforms to structure

Purity by HPLC ≥ 98%

Storage Store at 0-8°C

For Laboratory Use Only